



5309 Mohican Rd., Bethesda, Md. 20816 301-320-2870

## *PROBLEM OF THE MONTH*

Each month, we publish an unusual or interesting problem that was found and solved by our testing services.

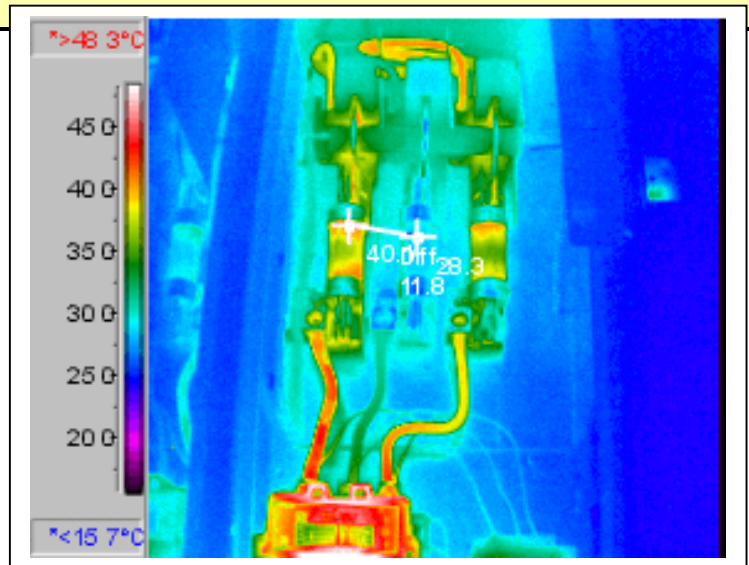
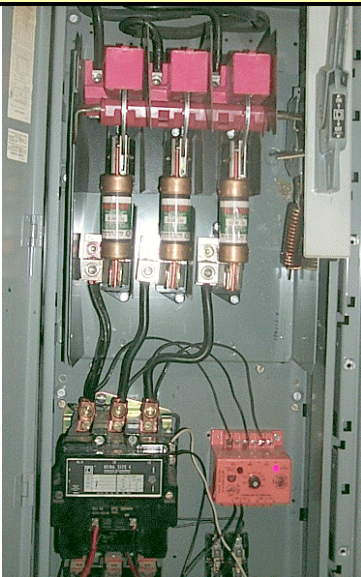
If you have some interesting cases, send us images, spectra or other information. If you'd like, we'll publish your case as the problem of the month.

|                       |  |
|-----------------------|--|
| <b>CLIENT</b>         | General Widgets                        |
| <b>PROBLEM NUMBER</b> | 4                                      |
| <b>EQUIPMENT</b>      | 2nd Floor, Mechanical room, MCC, AHU 2 |

**PROBLEM DESCRIPTION** B phase fuse is cold. Phase loads are 116, 0 and 116 amps. Motor is single phased. Voltage at line side is 208V between B and C phases and 166 volts at load side. B phase in the contact is open. It is unlikely that this motor will restart once it comes off line.

**RECOMMENDATION** Open contactor. Check internal connections. Check contacts. Repair as needed. Reassemble, using FOP test to ensure proper operation.

**HIGH PRIORITY: Yes**



Repaired by: \_\_\_\_\_ Date: \_\_\_\_\_