

Introducing: GroundSearch RadarSM



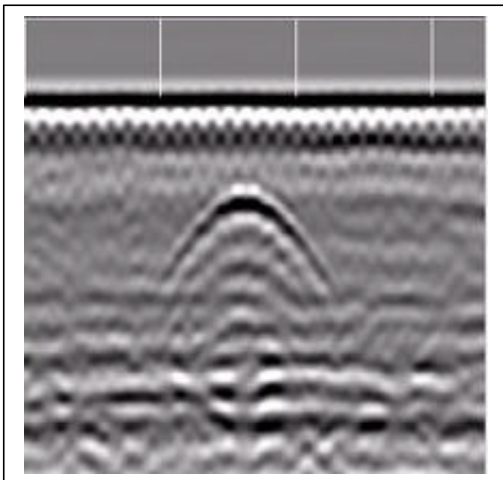
When you need to know what is below the surface

Radar Inspection of Subsurface Structures

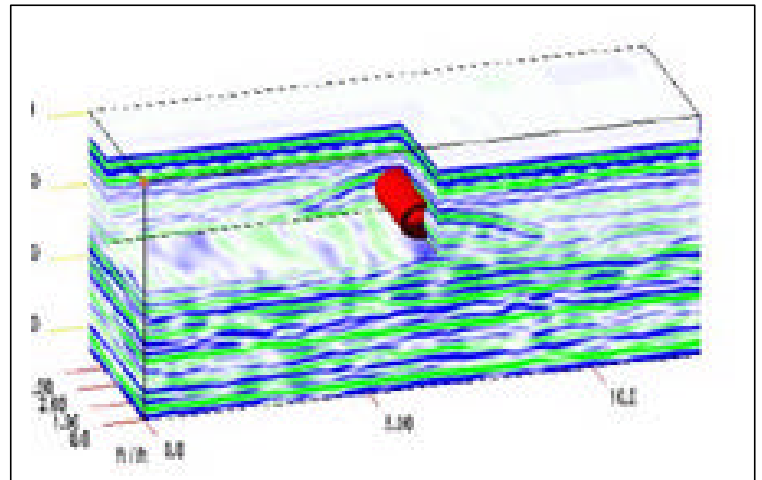
Comprehensive underground surveys identify the following:

- Metal Pipes
- Plastic Pipes
- Storage Tanks or Containers
- Buried Structures
- Utilities
- Cables
- Sewers

Ground penetrating radar provides continuous scans of subsurface conditions. Thus, even isolated structures can be detected. Unlike conventional radio frequency locating techniques, radar can find objects that are not electrically connected to the test signal. Even plastic pipes can be identified by radar. Radar can detect and discriminate among individual components in complex and crowded subsurface environments. Our services also utilize radio frequency and magnetic field locating instruments to ensure that we use the best tool for each situation.



Raw data showing pipe beneath concrete pad



Processed data showing pipe
Location in ground